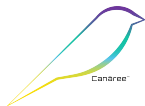




Canāree IX Air Quality Monitor

QUICK START GUIDE



Included in this Package



Canāree IX
Air Quality Monitor

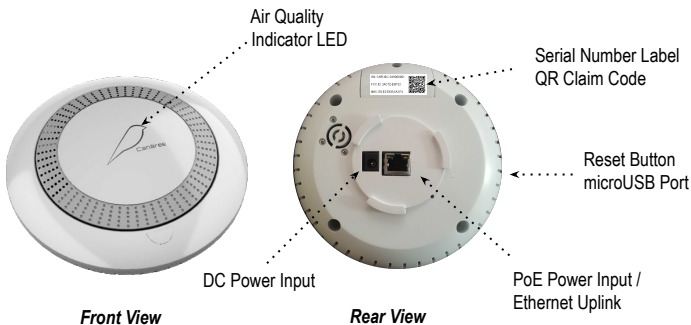


AC Power Supply



Mounting Bracket

Canāree IX Overview



Use only the included Power Adapter or 48V PoE / PoE+ to power the device



This product should not be considered as a replacement for existing smoke alarms.

STEP 1

Decide how you wish to connect and power the device. Options include:

1. Connect the Canaree IX directly to a 48V PoE / PoE+ Ethernet Port with Internet access using a standard Ethernet cable (RJ45)



2. Use the included AC Power Adapter if you wish to use Wired Ethernet or Wifi Operation modes without PoE. Instructions for configuring Wifi settings can be found at the end of this document.



Note: The device is not designed to run on USB Power!

STEP 2

SCAN ME



Scan the QR Code to register for a SenseiAQ Account or visit sensei.pierasystems.com to sign-up. An account is required to register your new device.

Create an account using your email address. Select a username and password and click Register to sign-up.

After registering login to SenseiAQ using the username and password you selected before proceeding to the next step.

STEP 3

Scan the QR-Code on the back of the Canaree IX device to register the device to your account.

SN: CNR-16C-24H000001

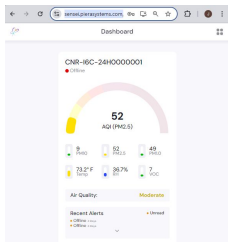
FCC ID: 2AC7Z-ESP32

MAC: E0:E2:E6:E4:A2:F4



Proceed to the link in the QR Code. It will report "Device Successfully Claimed" and appear on Dashboard in SenseiAQ once registered.

Repeat step 3 to register additional devices.

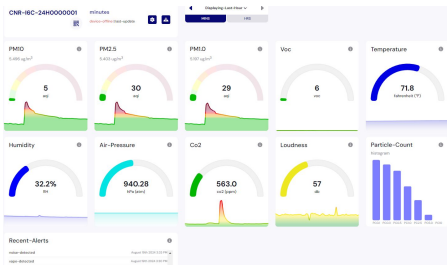


STEP 4

Selecting the device will show detailed information about air quality and environmental data in real time including Alerts.

Click on the settings icon to name your device and change its settings.

Click on the QR Code icon to share your devices Air Quality data with others.



LED COLORS

Canāree LED Lights will update in real-time based on PM2.5 Air Quality Index. The colors correspond with US EPA Recommendations regarding Air Quality and its impacts on Health. The LED Lights will flash for 10 seconds if smoke or vape is detected.

	Good AQI Score of 0-50		Smoke detected (Blink RED)
	Moderate AQ Score of 51-150		Vape detected (Blink BLUE)
	Unhealthy AQI Score of 151-300		No LED light: No power Source
	Hazardous AQI Score above 301		

Congratulations!

You are now in possession of the world's most accurate and responsive air quality monitor!

Next Steps:

- To learn more about the features of the SenseiAQ software, please refer to the SenseiAQ User Guide
- To further evaluate the capabilities of your Canāree sensor, please refer to the Canāree IX Datasheet.
- More resources at our support website www.pierasystems.com/support/ or email us directly suoport@pierasystems.com

Wifi Setup Notes

Canaree IX Supports most 802.11n Wifi Networks operating on 2.4G Bands. *5/6G Wifi is not supported*

Before Wifi can be used you must program your Wireless SSID / Password onto the device.
New devices can be configured Over the Air from a PC / Phone / Tablet using the procedure below.

If your device was previously operating on Ethernet and you wish to convert to Wifi, Press and Hold the Reset button on the side of the device for 3 seconds. The device will reboot into Wifi Configuration mode
The LED Will blink green indicating the device is ready to setup Wifi over the Air

Wifi Setup OTA

From any Wifi-enabled PC or Phone/Tablet Connect to the Wireless network named "CNR-I6C-XXXXXXXXXX"
The Serial number of your Canaree IX device on the back label)

The default password will be 'piera123'
The network will report "No Internet Access" this is normal



← → ↻ ▲ Not secure | 192.168.4.1

Canaree I5 Setup

Wifi SSID:

Password:

Once connected open <http://192.168.4.1> from any web browser. You will be prompted select the configuration mode (Ethernet or Wifi) and enter your networks Wifi credentials into the device to configure it initially.

Press Submit - the Canaree will reboot and your Phone or PC should connect back to its regular (Default) Wifi network. You will noticed the colors will stay solid indicating current air quality.

Click on the link provided at the Success page to register your device. Or scan the QR Code on the back of the Canaree device to register to your account.

← → ↻ ▲ Not secure | <http://192.168.4.1>

Success, you may now reconnect to your WIFI if needed.

After reconnecting to the Internet, you can use the following link to register your device: <https://sensei.rjerasystems.com/claim-code/a1689e83c904eb6f>